

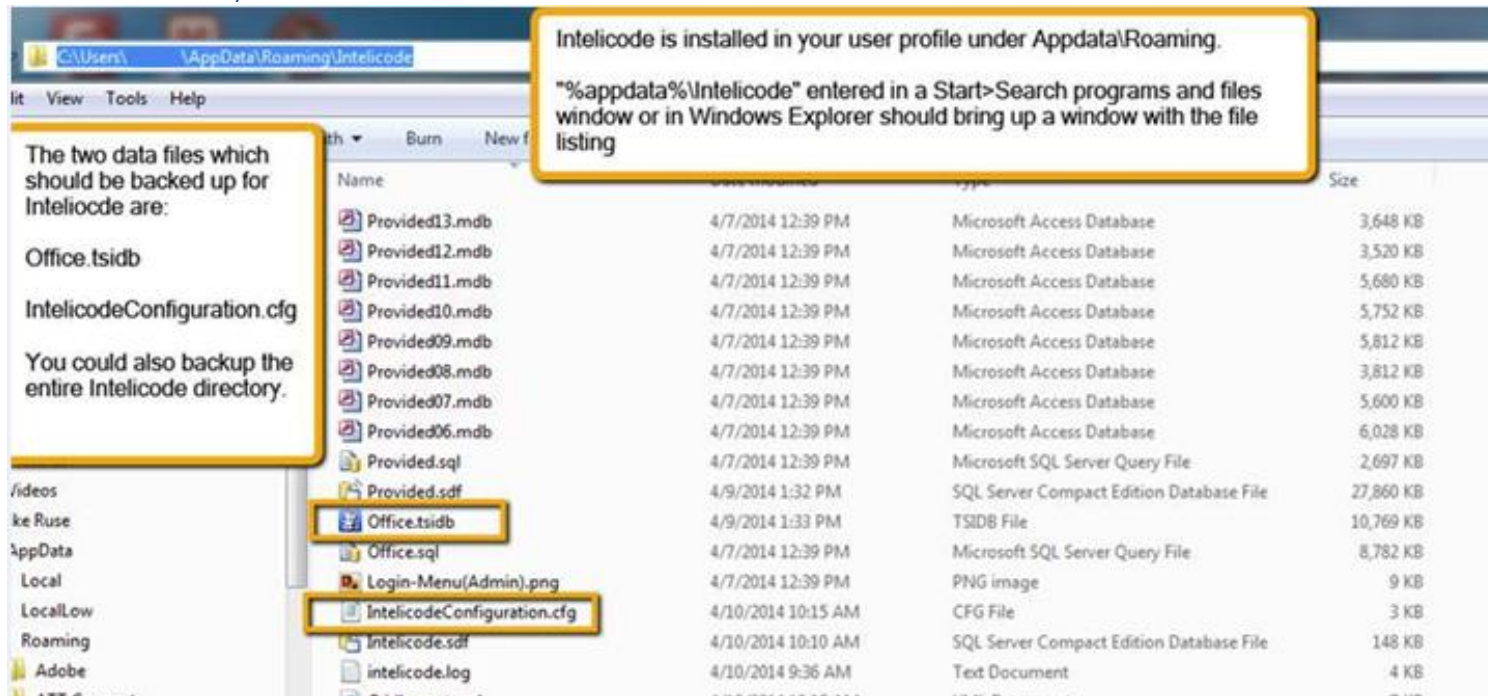
Intelicode 'Local' database files for Backup and Restore

Page 1 of 3

Backup Intelicode 'Local' data:

Here's a summary of the files to backup for installations using a 'Local' database (data is resident on each PC and not accessible to other Intelicode users):

- Two files to back up: Office.tsidb and IntelicodeConfiguration.cfg found in the Intelicode application directory.
- Location of the Intelicode application directory depends on the installer used.
 - A 'Standard' installer creates the Intelicode application directory in the currently logged in user profile. The following screen shot shows an example after running a 'Standard' installer. Example: "Intelicode 14.0.2.1 Setup.exe"
 - A 'Server' installer creates the Intelicode application directory in Program Files or Program Files(x86). 'Server' installers include the name 'Server' in the title such as: Example: "Intelicode 14.0.2.1 Server Setup.exe"
- Screen shot of the app files for a PC user after installing the 'Standard' version of Intelicode (Users *profile name* in path will be different on each PC):

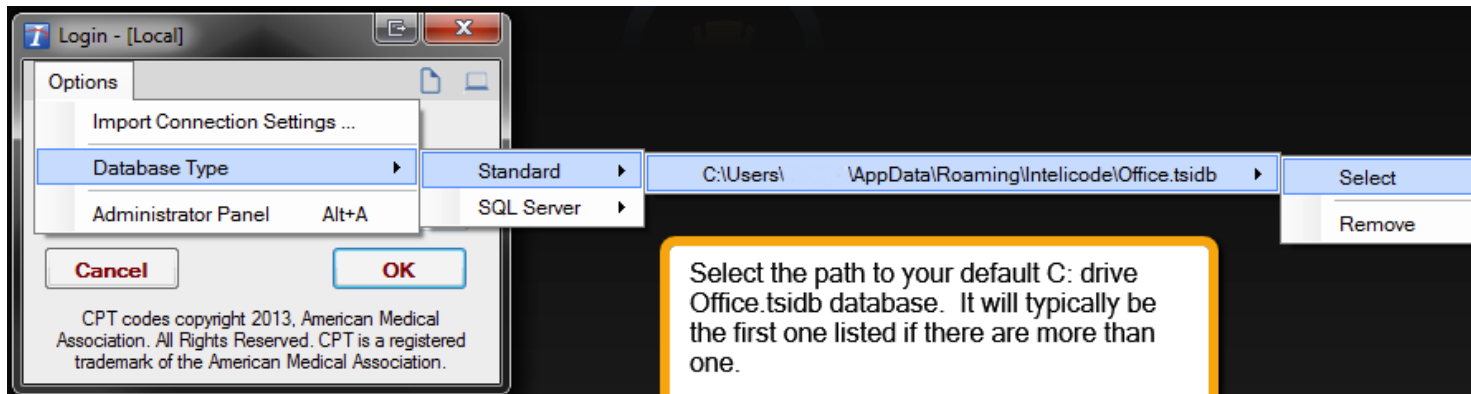


Intelicode 'Local' database files for Backup and Restore

Page 2 of 3

Notes:

- Local Intelicode databases have an extension of .tsidb and may be located in multiple locations on a PC. To identify all locations of .tsidb databases to backup, launch Intelicode>from the Login Menu>choose 'Options'>then 'Database Type'>then 'Standard'>a listing of each database file and the path will be shown. Backup all the .tsidb databases that are currently relevant. A backup copy of IntelicodeConfiguration.cfg is only needed by Intelicode Support if there is a problem opening the Office.tsidb database when it is moved to a new computer. Do not copy IntelicodeConfiguration.cfg to a different computer Intelicode directory.
- The '.tsidb' files are Microsoft SQL Server Compact Edition databases designed to reside on the local drive. They are not supported to be accessed from a network drive or to have concurrent connections. Making a regular backup is suggested in order to mitigate potential data loss. Intelicode is designed to launch when one of these databases is double clicked. If you make a copy to a network share and double click that network file you'll probably get an error as Intelicode attempts to access that database across the network. If that happens just go to the Login 'Options' dropdown window and select Database Type>Standard>C:\(path to your local profile Intelicode app directory and .tsidb database)>Select. That will set Intelicode to launch using the Local database. The screen shot below is an example.



If Intelicode data needs to be shared between two or more auditors, a SQL Server is required. Two databases would be set up on either an existing SQL Server or a new installation. Intelicode could then be configured to use the SQL Server databases for shared access rather than the Local databases. Here's a link to a doc with information about setting up the shared SQL Server databases: [SQL Server Express installation for Intelicode](#)

Intelicode 'Local' database files for Backup and Restore

Page 3 of 3

Restore Intelicode 'Local' data:

- After installing and activating Intelicode on a new computer, 'Local' data can be copied from a previous instance and used on the new installation. Note: the .tsidb database may be named something other than the default name 'Office'. The following example steps reference the default 'Office.tsidb' name. Adapt accordingly if the old PC uses a differently named .tsidb database.
- Make a copy of the most current version of 'Office.tsidb' from the old computer. See Backup steps above for location of the Intelicode application directory and most current 'Office.tsidb' database
- Paste the copied 'Office.tsidb' file into the new computer Intelicode application directory.
- If the install is new, overwrite the initial default 'Office.tsidb' database in the new PC Intelicode directory if applicable.
- Then...double click the newly pasted 'Office.tsidb' database to launch Intelicode.
- The desktop shortcut will launch Intelicode using the newly pasted database once it is selected the first time by double clicking.

Note: the backup copy of IntelicodeConfiguration.cfg is only needed by Intelicode Support if there is a problem opening the Office.tsidb database. Do not restore IntelicodeConfiguration.cfg to a new computer install of Intelicode.

Please contact Support at Intelicode if additional information is needed.

Email: support@intelicode.com

Phone: 800-786-4231

<http://intelicode.com/support>